

NOVEMBER 14, 2016

DEPARTMENT OF HISPANIC STUDIES
AAPPL PLACEMENT GUIDELINES FOR SPANISH

✚ Exams taken spring 2015 and onward (AAPPL exam, includes listening portion)

Performance Score	Points awarded
A	10
I-5	9
I-4	8
I-3	7
I-2	6
I-1	5
N-4	4
N-3	3

✓ CALCULATE PLACEMENT: Listening Score + Reading Score = Final Placement score

PLEASE NOTE: Placement scores should be calculated according to the version of the exam being administered.

SPANISH—EXAM A	
15-16	203
10-14	103
2-9 or no previous experience	101

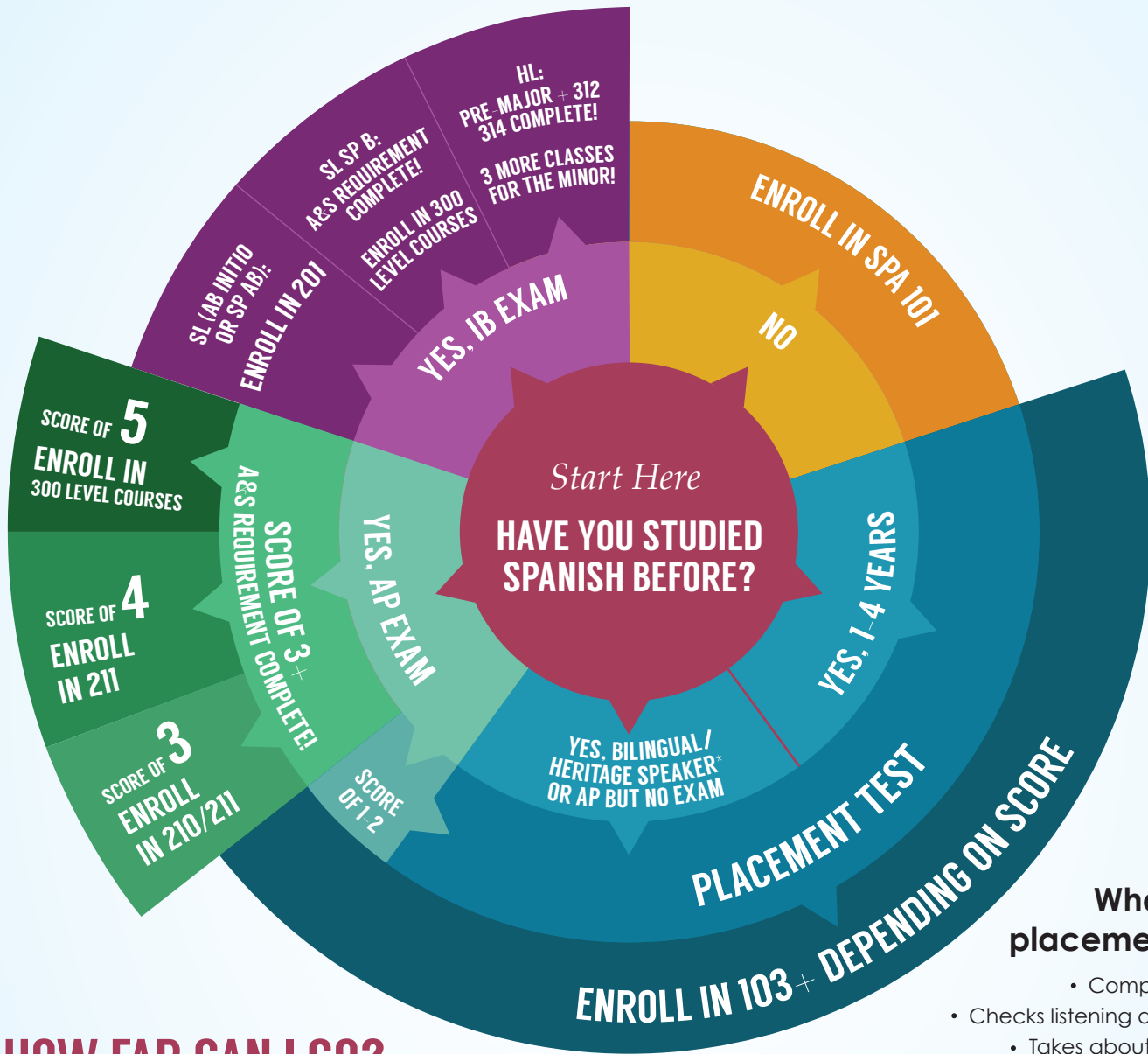
20	See department
18-19	210/211
15-17	203
10-14	103
2-9 or no previous experience	101

SPANISH—EXAM B

✓ Placement into 102, 201, and 202 only by completion of pre-requisite.

✓ *Students may enroll directly in courses above 203 based on credits earned through IB and AP exams (see <http://www.uky.edu/Admission/earn-college-credit> for equivalencies)

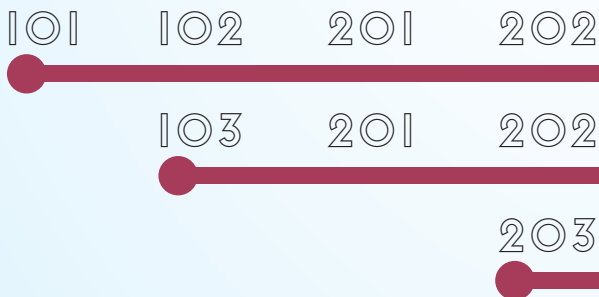
SPANISH AT UK



What is the placement test?

- Computer-based
- Checks listening and reading
- Takes about 30 minutes
- Given during advising conferences or in the department by appointment

HOW FAR CAN I GO?



A&S requirement complete!

Or, go for the major or minor:
 210/211 (or 215) and 310
 +4 SPA = minor
 +10 SPA = major

*Bilingual and heritage speaker students have experience speaking Spanish at home or using Spanish outside of the classroom

Department of Hispanic Studies

11th floor POT

ruth.brown@uky.edu

hs.as.uky.edu

@UKHISPANIC

